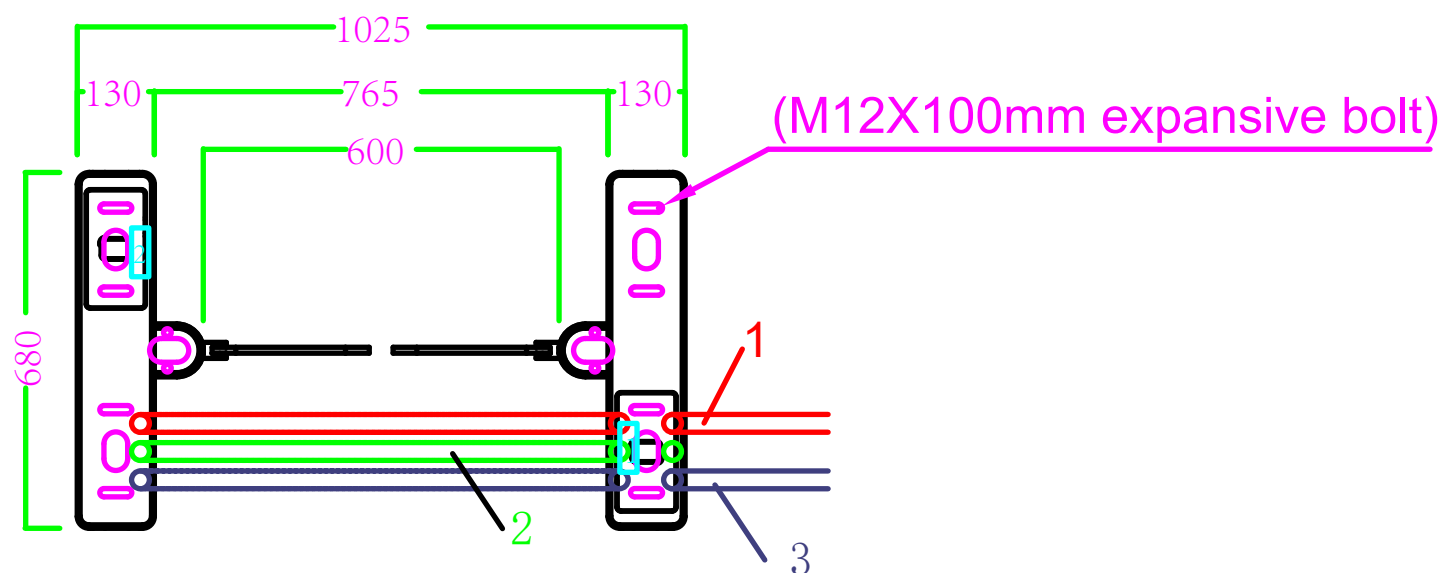
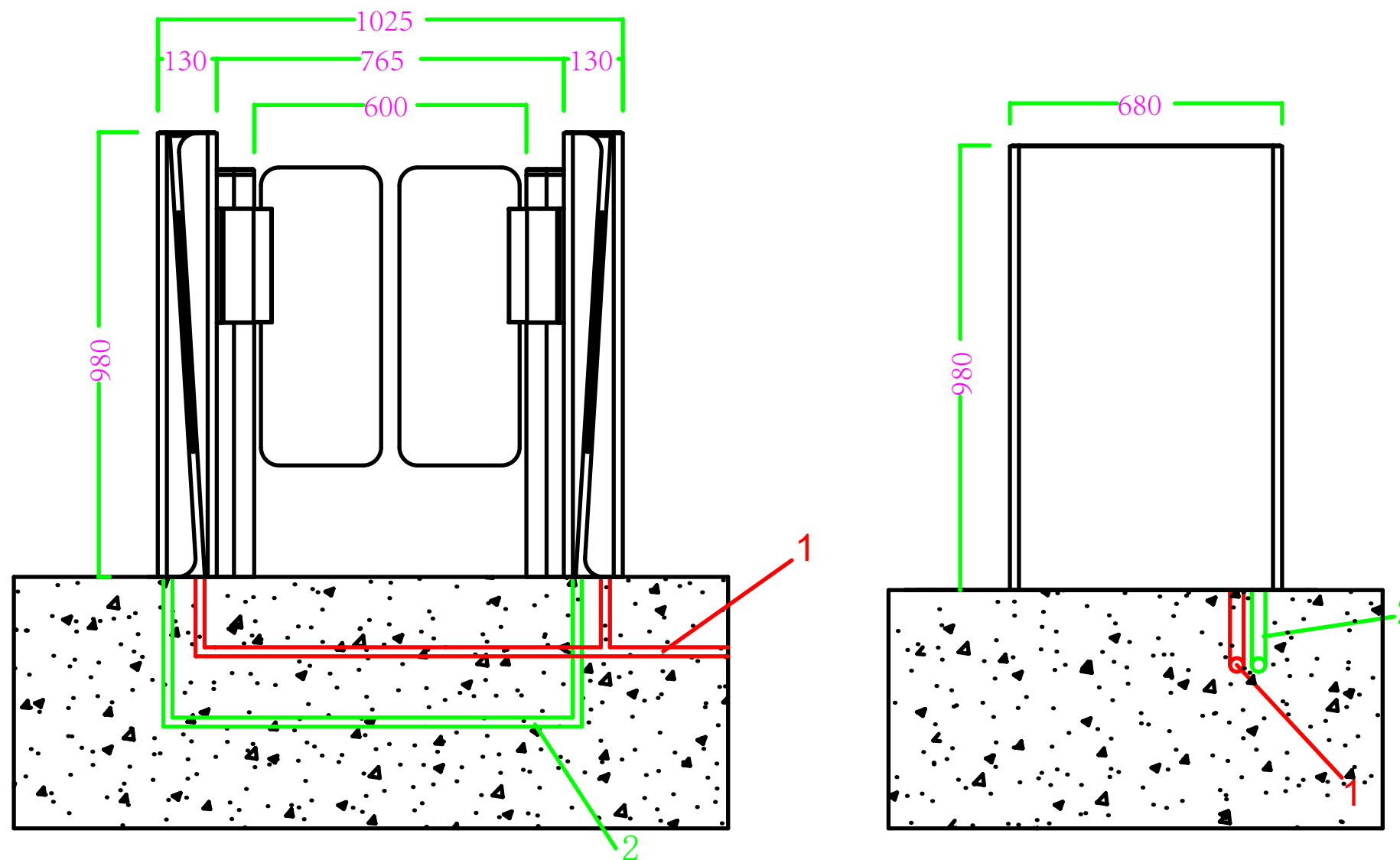


Unit:mm



Installation Manual:

- 1 █ The Ø20mm PVC tube for AC 220V Power wires(3 X Ø2.0mm).
- 2 █ The tube for connecting vice-machine to master machine in the same lane (CAT5 network cables*2PCS, 2 * 1.0mm Power wires*1PCS) .
- 3 █ TCP/IP ethernet cable for connecting access device to PC.
- 4 █ 1.Master servo motor driver ,2 .Vice- servo motor driver.
- 5 ○ Fixing the equipment with M12 X 100mm expansive bolt .

Mark:All wires extending out of the ground shall be no less than 2M.