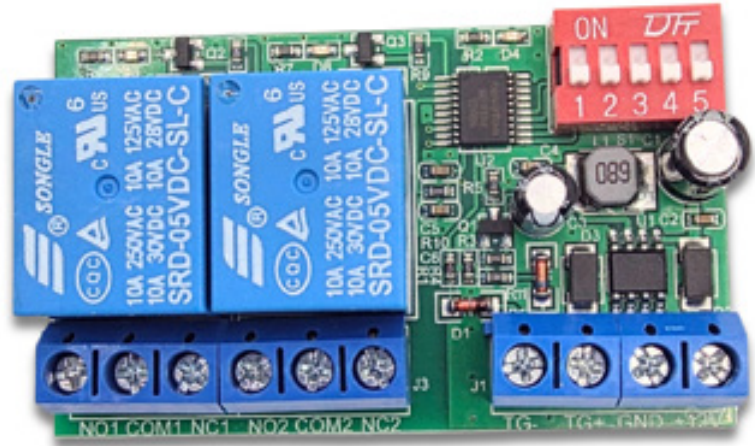


SMR-D1010

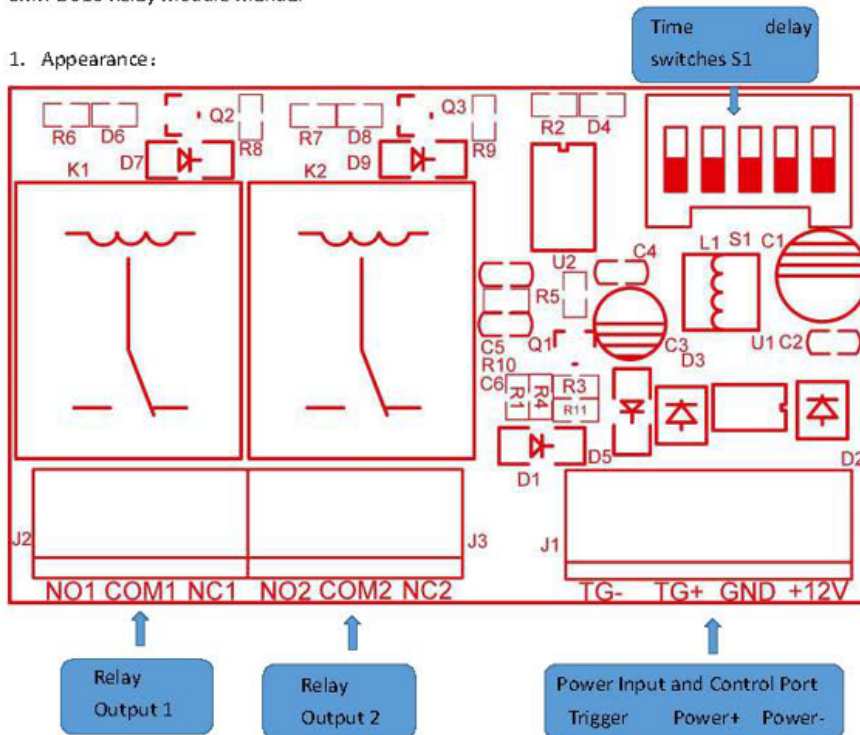
Versatile Relay with Timer

- Power Input 12~24Vdc
- 5Amp@250VAC / 30VDC Relay rating
- 2 x relay outputs
- Changeover relay contacts
- + or - Trigger
- Adjustable Timer **0 ~ 75mins**



SMR-D010 Relay Module Manual

1. Appearance:



2. Use:

- Delay time adjustment coding switch: used to set the delay recovery time after triggering, minimum 10 seconds, maximum 75 minutes. See the table below for delay time and encoding switch position settings.
- Relay output group: two sets of relay output terminals, maximum 10A.
- Power input and control port: positive and negative poles of power input and positive and negative trigger ports. The basic wiring is as follows:

