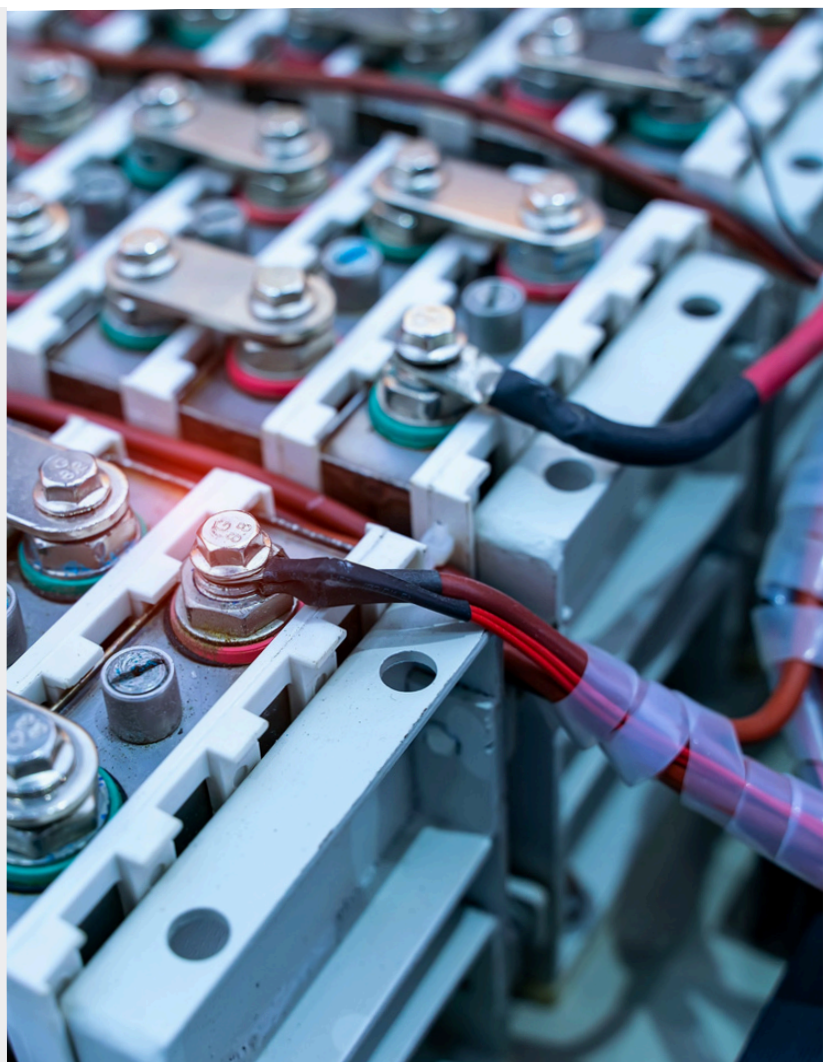




RECHARGEABLE BATTERY



Lithium Iron Phosphate LiFePO_4

NEW BATT-7.5-LI Battery 63-65

LiFePO_4

Model no.: BATT-7.5-LI



Advanced LiFePO_4 Technology

offers superior chemical and thermal stability, providing more than 2,000 cycles at 80% depth of discharge.



Directly connects to conventional DC 13.8–14.4V charging systems without the need for special equipment.



Lasts 10 times longer than conventional lead-acid batteries, making it an ideal investment for long-term use.



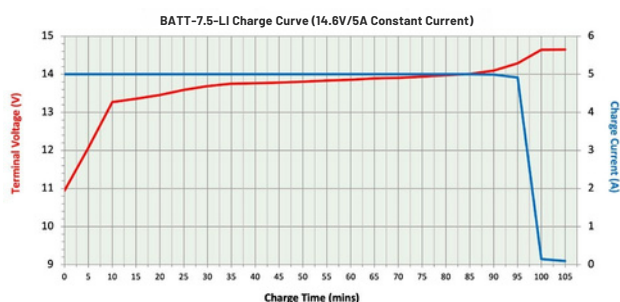
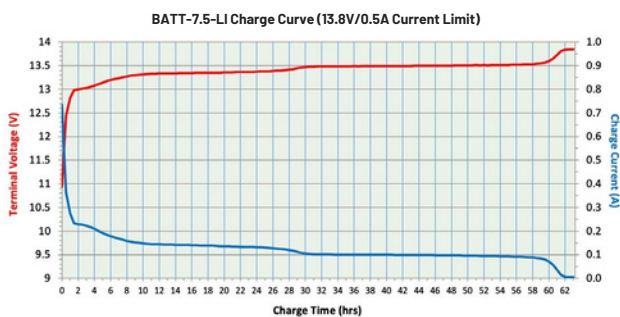
Built-in protection against input over-voltage, over-current, over-discharge, short-circuit, and high temperature, ensuring the highest level of operational safety.



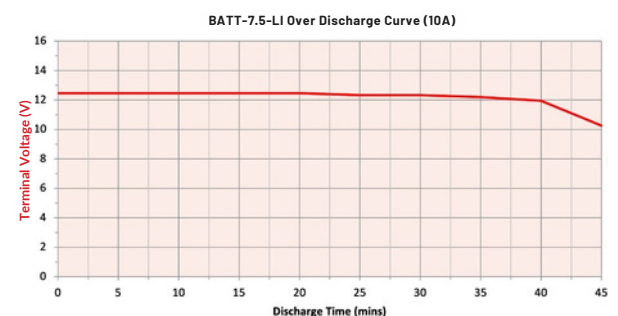
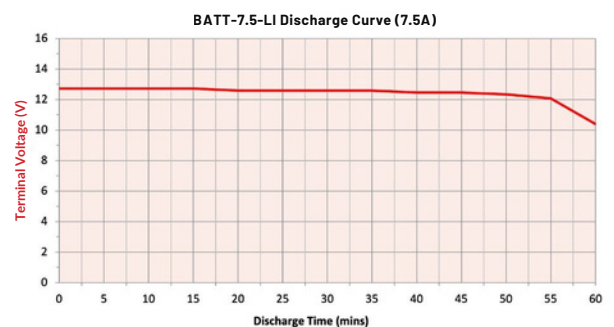
Fully compliant with EU safety

standards and certified for sea and air transportation, ensuring safe and smooth logistics.

Charging Performance

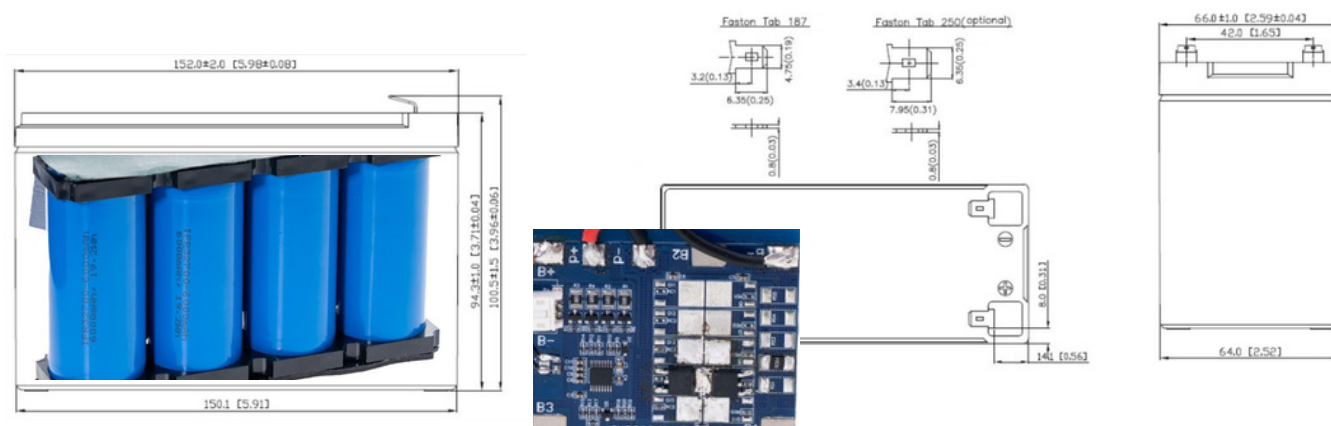


Discharge Performance



**BATT-7.5-LI****Other Lead-Acid Battery**

Nominal Voltage	DC 12.8V	DC 12V
Capacity	7.5Ah (96Wh)	Similar 7Ah-8Ah
Cycle Life	2,000+ Cycles	200-300 cycle
Weight	30–50% Lighter	Heavy
Charge Efficiency	95–98%	70-80%
Maintenance	No maintenance required	Regular maintenance (e.g., water topping for flooded types)
Self-Discharge Rate	<3% per Month	10–15% per month
Operating Temperature	Wide range (-20°C to 60°C)	Limited, especially at low temperatures
Safety	Extremely stable, no thermal runaway	Risk of acid leakage, gas emissions
Initial Cost	Higher	Lower
Long-term Cost	Lower (Due to long lifespan)	Higher (Due to frequent replacement)



MODEL		BATT-7.5-LI
BASIC INFORMATION		
Battery Type		LiFePO4
Rated Voltage (VDC)		12.8
Rated Capacity (Ah)		7.5
Store Energy (Wh)		96
Standard Charge Current (A)		3(0.5C)
Max. Charge Current (A)		5.0
Max. Discharge Current (A)		10
Normal Charge Cut-off Voltage (V)		14.6
Normal Discharge Cut-off Voltage (V)		9.2
Internal Resistance (mΩ)		≤75
Recommended Charge Voltage (VDC)		13.8 - 14.44
Recommended Operating Temperature (°C)		0 - 45
Cycle Life		≤ 2000 times at 25°C (Drop to approximately 80% of the initial battery capacity)
PROTECTION		
Over Charge Voltage		Voltage > 14.8V, Battery shutdown, re-charge up to recover
Over Charge Current		Current > 6.25A , Battery shutdown, re-charge up to recover
Over Discharge Voltage		Voltage < 8.8V, Battery shutdown, re-charge up to recover
Over Discharge Current		Between 10 - 15A, Battery shutdown, re-charge up to recover
Battery Polarity Reverse Connection		Battery shutdown, re-charge up to recover with corrected connection
Terminal Short-Circuit		Battery shutdown, re-charge up to recover when fault conditions are removed
Over Temperature		State of charge: < 0 or > 50°C ±5°C / State of discharge: < -20 or > 70°C ±5°C
Internal Cells Balancing		In charging > 3.525V ±0.05V per cell, the internal current shunt circuit is activated (40mA ±10mA)
SAFETY		
Safety Standard		Compliance to EN 62133 / UN38.3
UN38.3		Tested and Passed according to standard ST/SG/AC.10/11/Rev.8/subsection 38.3
EMC		
EMC Standard		Compliance to EN 61000-6-1 / EN 61000-6-3
OTHERS		
Terminal		Faston Tab 187 (default) or 250
Long Term Storage		Suggested charge every 6 months
Dimensions (mm)		152(L) x 66(W) x 100.5(H)
Weight (kg)		1.1 approx.