

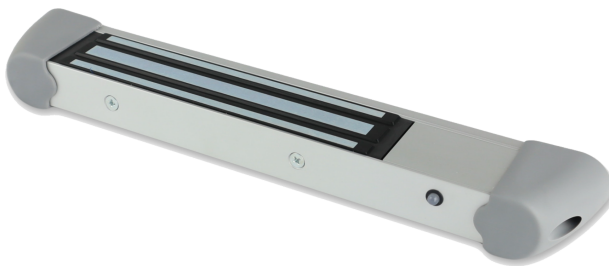
# EDS ENFORCER-A10002

## Emergency Door System / Delayed Egress System

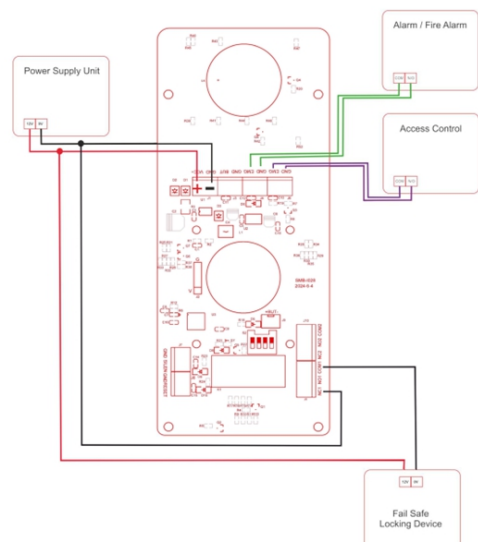
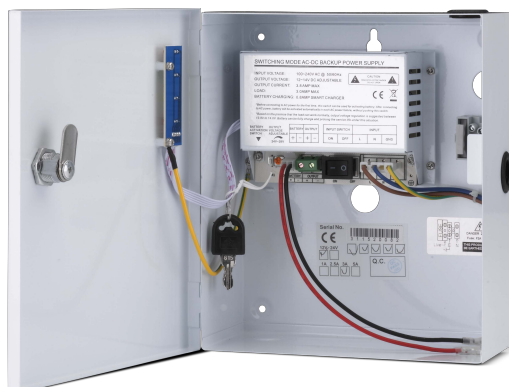
- Operating voltage 12V~24VDC
- Die Cast Metal Housing
- Change-over Relay Output
- 0, 5, 10 , 15 Second Delay
- Audible Alarm
- Independently tested to EN13637
- LED Indicators
  - RED** -Locked
  - YELLOW**(flashing) -Timer Activated
  - GREEN** -Door Unlocked
- Fire Alarm Input
- Access Control Input



EDS-ENFORCER-A10002 PS5A-12 Power Supply, EDS Controller, 10002 Magnetic Lock, Magnetic Lock Safety End Caps



### EDS ENFORCER INSTALLATION DETAILS



Units are sold complete with Locking Device and PSU , that have been tested together